

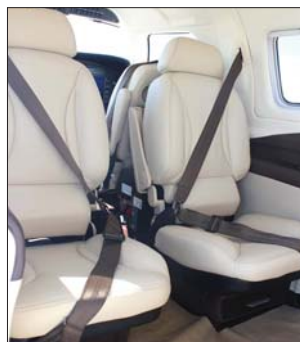


SPECIFICATION:	SERIAL NUMBER	4697604
	REGISTRATION	OK-PMF
	YEAR	2015
	TOTAL FLIGHT TIME	APPROX. 100 HOURS
	ENGINE	PRATT & WHITNEY CANADA PT6A-42A
	PROPELLER	Hartzell HC-E4N-3Q

EXTERIOR:	DuPONT IMRON HIGH QUALITY POLYURETHANE PAINT	
	TOP BASE:	STARLIGHT SILVER MET. 1217
	BOTTOM BASE:	PHANTOM GREY MET. P1217
	ACCENT STRIPES:	LAS VEGAS GOLD MET. P1183

INTERIOR:	6-PLACE EXECUTIVE INTERIOR WITH CLUB SEATING AND WRITING TABLE.	
	PREMIER ELEGANCE INTERIOR – "WELLINGTON"	
	6-PLACE INTERCOM WITH PILOT/CREW ISOLATION FEATURE, USB CHARGERS AND STEEL CAP HOLDERS FOR EACH SEAT.	
	FEATURES	CLUB SEATING ARRANGEMENT (4 SEATS)
		RECLINING/FOLDABLE SEATS WITH ARMRESTS
		FOLDING WORK/DINNIG TABLE
		CUP HOLDERS
	INDIVIDUAL READING LIGHTS AND AIR OUTLETS	
	INDIRECT LED ACCENT LIGHTING	
	115V AC OUTLET IN THE CABIN	

WARRANTY: THE AIRCRAFT IS STILL UNDER WARRANTY.



AVIONICS: GARMIN G1000 AVIONICS SUITE WITH SYNTHETIC VISION

GARMIN

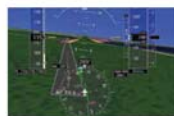
TWO 10-INCH PFD'S, ONE 12.4-INCH MFD
 ASPEN EFD-1000 STANDBY FLIGHT INSTRUMENTS
 DME KING KN-63 INTEGRATED TO G1000 PFD
 GARMIN GFC-700 DIGITAL AUTOPILOT COUPLED GO-AROUND
 DIVERSITY DIGITAL TRANSPONDER - GTX33DES WITH EXTENDED SQUITTER
 AND ADS-B
 FMS WITH KEYBOARD AND AUTOPILOT CONTROL PANEL

ENHANCED SAFETY PACKAGE

- SYNTHETIC VISION
- AUTOMATIC LEVEL MODE (BLUE BUTTON)
- ELECTRONIC STABILITY PROTECTION (ESP)
- UNDERSPEED PROTECTION (USP)
- COUPLED GO-AROUND

SITUATIONAL AWARENESS PACKAGE:

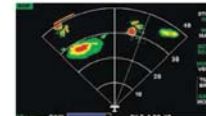
- WEATHER RADAR (GWX-69) WITH MOVING MAP OVERLAY
- TAWS-B TERRAIN AWARENESS
- TRAFFIC ALERTING SYSTEM (GTS-825) WITH ADS-B OUT FUNCTIONALITY
- GARMIN GSR-56 GLOBAL SATELLITE DATALINK (IRIDIUM)
- WX-500 STORMSCOPE
- JEPPESEN CHARTVIEW AND SAFETAXI



PRIMARY FLIGHT DISPLAYS (PFD)



MULTI-FUNCTION FLIGHT DISPLAY (MFD)



WEATHER MONITORING



GARMIN GFC-700

OTHER EQUIPMENT:

DIGITAL CABIN PRESSURIZATION,
 DIGITAL AUDIO PANEL GMA-350 WITH SATELLITE PHONE INTEGRATION,
 YAW DAMPER SYSTEM, FULL KNOWN-ICE PACKAGE, FIKI CERTIFIED, ECTM – ENGINE CONDITION TREND MONITORING. COMPLETE LED LIGHTING. HARDWIRED COCKPIT BOSE A20 HEADSETS (6-PIN POWERED), 3 USB CHARGING PORTS, ENGINE FIRE DETECTION SYSTEM, EMERGENCY OXYGEN SYSTEM (PILOT & PASSENGERS), AIR CONDITIONING SYSTEM

PRICE 1.890.000 USD (+ VAT WHERE APPLICABLE) - SPECIFICATION SUBJECT TO VERIFICATION UPON INSPECTION

